



2024 annual report to the Community

Andamooka Primary School and Andamooka Preschool

Andamooka Primary School number: 509

Andamooka Preschool number: 1557

Partnership: Far North



School principal:

Bronte Stanford

Date of endorsement:

14/03/2025



Government
of South Australia
Department for Education

Context Statement

Andamooka Primary School caters for students from R-6. At the time of this report, the enrolment in 2024 is 15. Andamooka Primary School is classified as Category 2 on the Department for Education Index of Educational Disadvantage. At the time of this report, the school population includes 13% Aboriginal students, 13% students with disabilities. Further information about the school is available on the school's website (including its context statement), as well as the My School website.

Information about Andamooka Preschool is available on the centres website, as well as the Australian Children’s Education and Care Quality Authority (ACECQA) website.

Data Source: Department for Education data holdings from Mid census captured in AUGUST 2024.

Governing Council Report

Yolanda Stevenson, 2024

2024 was yet another exciting year with families coming and families leaving. Yet our community handles it as best we can and enjoy the small family feel of the school. We had visits from Deb our Education Director, Martin and Peter who lead the Department and the Hon Blair Boyer, the Minister for Education. All were very affirming of the positive safe culture of our community connected school.

We welcomed new members to the governing council, had regular meetings and saw a change of uniform to reflect our new more meaningful, student chosen school values being displayed and embraced.

We are involved in ongoing discussions regarding having our basketball court resurfaced, and continuing to push for a more permanent solution to our carpark concerns. Suggestions have been tabled re possibly new playground equipment to add to our site, yet these are on hold until the finalisation of our basketball court resurfacing costings are known. More shade is a priority when we can. A grant was secured to help fund a new chilled water fountain for the students and this should be installed soon. The Community Hub at Roxby began holding the parenting course ‘The circle of Security’ every fortnight at the school, however due to unexpected circumstances this was not able to be completed.

New signage- The school arranged to freshen up our school image and integrate new safety signs to help our community understand how much we care about our site.

Winning the Collective School Wellbeing Award for the whole state was totally out of the blue and yet we feel it reflects all the hard work, we the council, the school and the community have done to put our school back on the right path going forward. We appreciated the trip arranged by the department and the school so that some of the governing council members along with staff representatives could travel to Adelaide to receive the award. Those that went certainly made a lasting impression on all whom they met.

We continue to endorse the school investing the necessary financial resources into the staffing, and materials in the here and now, so our students have the best possible educational opportunities to build upon throughout their lives. We recognise and thank our committed school staff for the wonderful environments they create for our children and the extra –curricular activities they find and make possible for the kids

Chair of the GC

Performance Summary

NAPLAN Proficiency

In 2023 the Australian Curriculum, Assessment and Reporting Authority (ACARA) - a Commonwealth Independent statutory authority - announced changes to NAPLAN performance reporting. The new approach replaces the previous numerical NAPLAN bands and the national minimum standard.

NAPLAN results are not shown where sites have enrolment of less than 6 students in the applicable NAPLAN year levels.

Preschool Attendance

	Term 1	Term 2	Term 3	Term 4
2021 centre	72.3%	60.8%	64.2%	60.8%
2022 centre	100%	57.1%	66.2%	19.9%
2023 centre	86.7%	81.6%	100%	92.2%
2024 centre	97.3%		62.9%	

Based on attendances recorded in the two-week reference period each term. Data for eligible enrolments as described in the department's Enrolment policy. Attendance rates may differ to previous reporting with the transfer from calculations based on deemed attendance to actual attendance using booked hours divided by attended hours. Data Source: Department for Education Attendance Data, Semester 1 Report 2024. A blank cell indicates there we no students enrolled.

School Attendance

Year Level	2022	2023	2024
Reception	67.5%	86.1%	96.1%
Year 01	89.4%	65.4%	73.7%
Year 02	65.2%	61.5%	83.2%
Year 03	87.5%	91.4%	95.0%
Year 04	77.6%	77.1%	86.1%
Year 05		80.9%	81.5%
Year 06	78.9%	46.4%	89.9%
Total	74.1%	73.9%	88.1%

Data Source: Department for Education Attendance Data, Semester 1 Report 2024. A blank cell indicates there we no students enrolled. 'Primary Other' includes students enrolled in specialised education options. 'Secondary Other' includes students who have already spent a year at Year 12 and elected to undertake further study at Year 12.

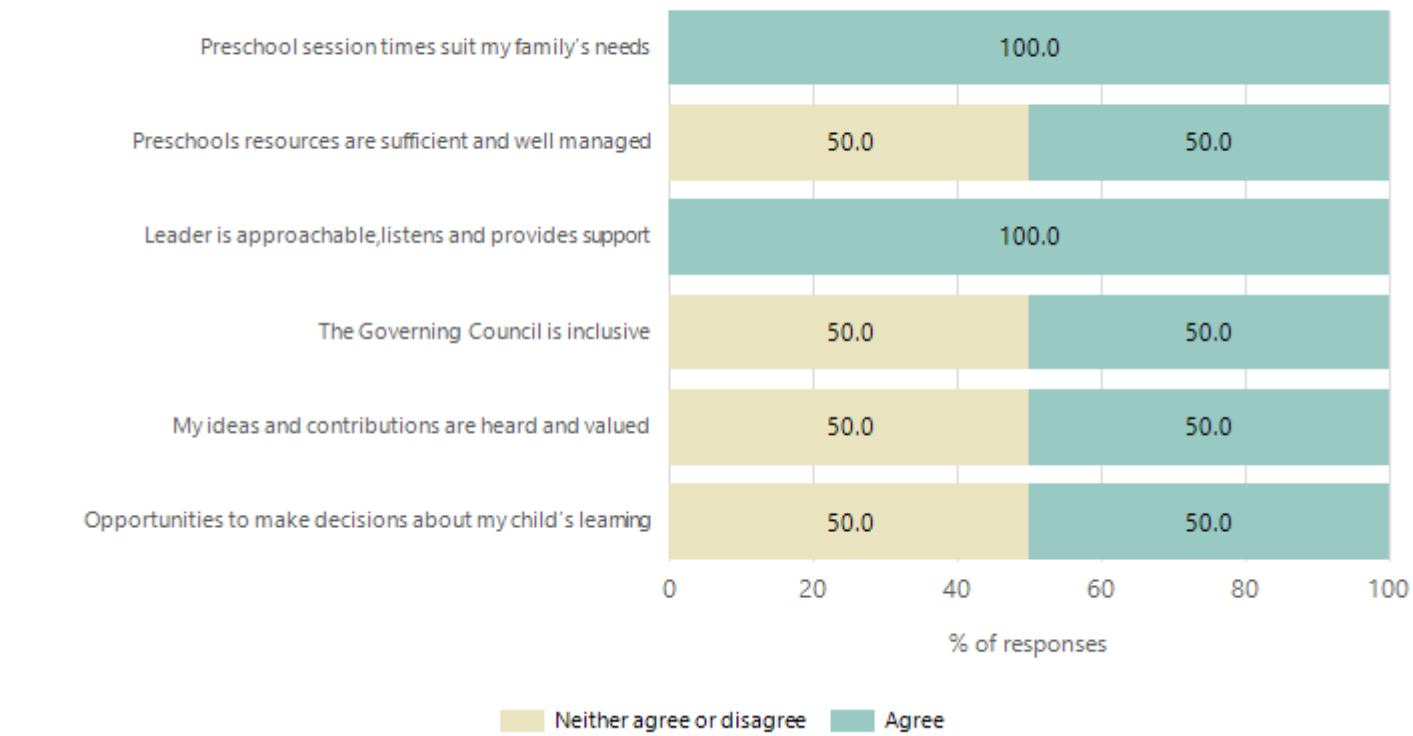
Attendance Comment

In South Australia, preschool attendance is not compulsory, but it is strongly encouraged. Preschool gives children the best opportunity to develop skills, which prepare them for school. These benefits include establishing positive routines and habits, friendships and connections as well as developing communication, problem-solving and creative skills. All children are entitled to access a preschool program over 4 terms the year before they start school.

In South Australia, all children and young people must be in school from 6 years to 16 years old. They must attend a government or non-government school full time. From age 16 to 17 however, young people must attend school or an approved learning program (such as an apprenticeship, traineeship, accredited course or university). Schools and parents must encourage and support students to come to school every day. Parents and caregivers must make sure their child is enrolled in a school, and attends school all day and everyday it is open, unless a child is sick or has an approved exemption. Teachers and leaders actively follow up when a student misses school, including recording all absences and non-attendance. All schools in South Australia have local attendance procedures governed under the Education and Children's Services Regulations 2020.

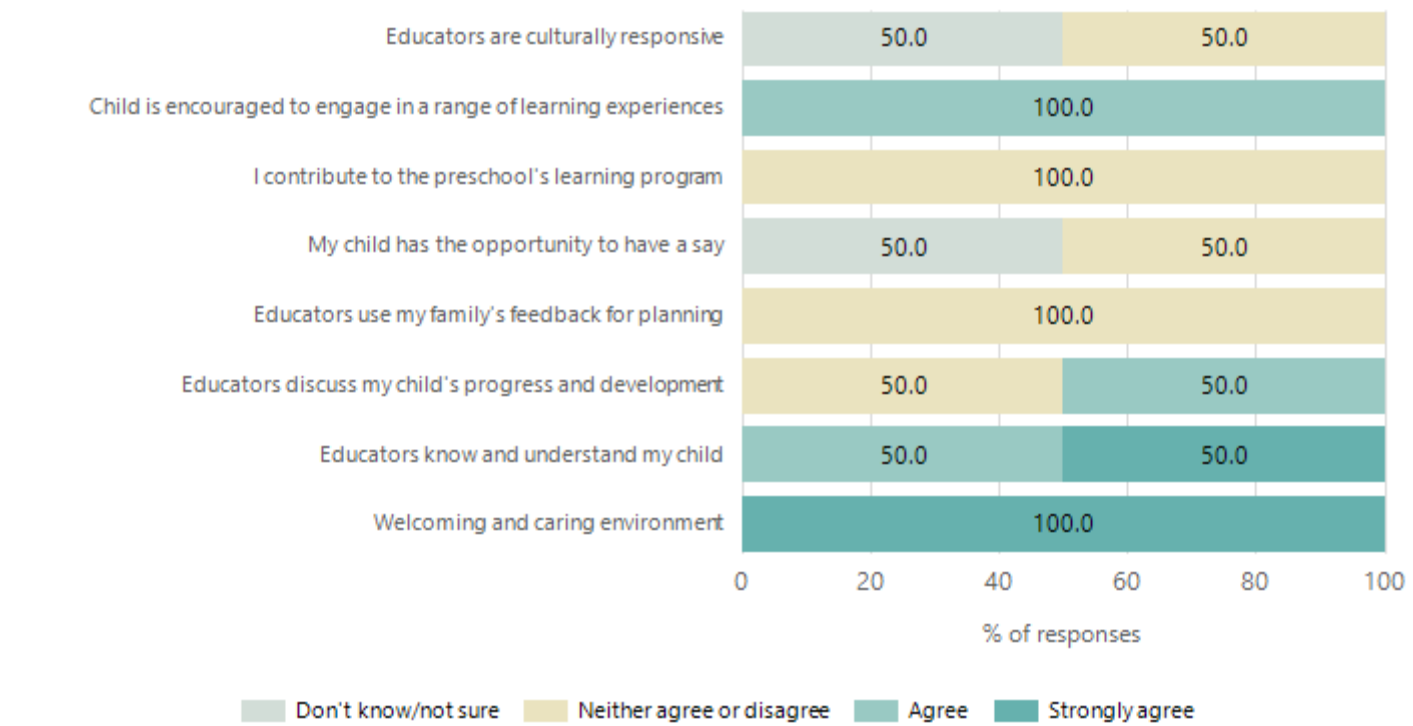
Preschool Family Opinion Survey

Governance, Leadership and Management



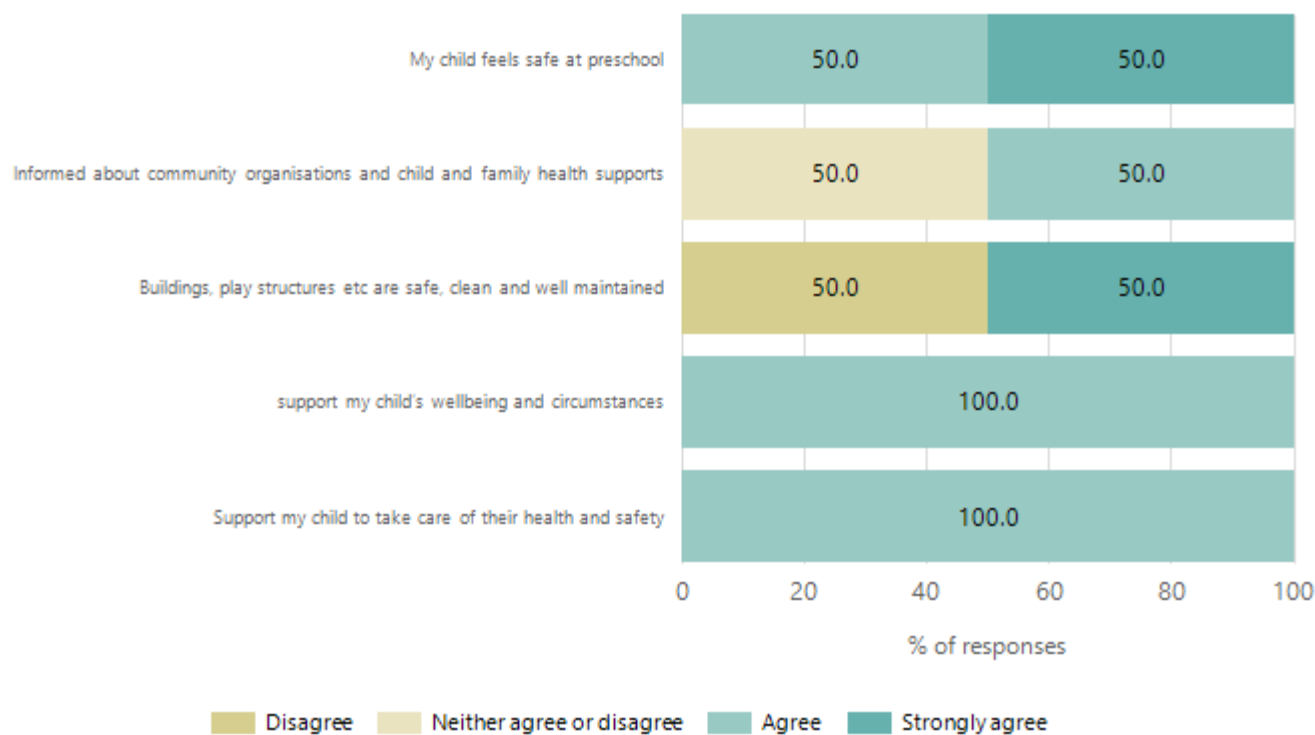
Data Source: 2024 Department for Education Preschool Family Opinions Survey, Term 3 2024.

Quality of Teaching and Learning



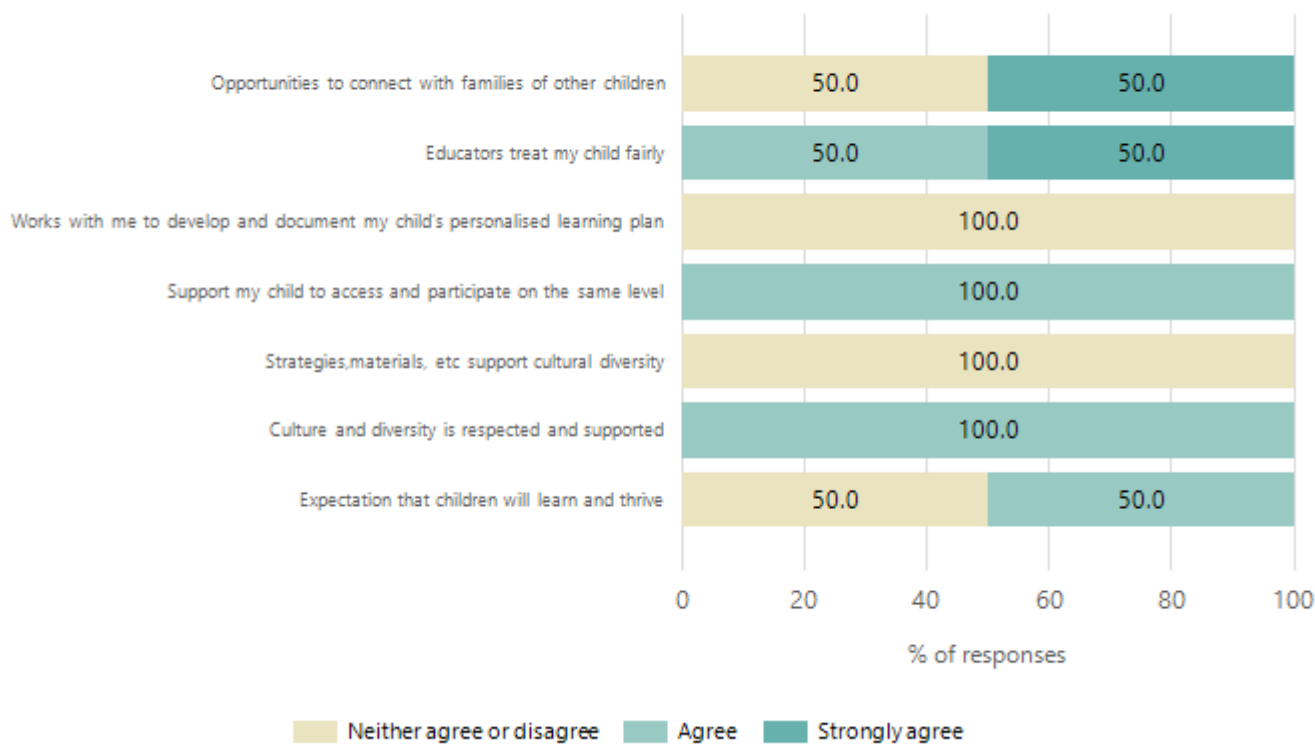
Data Source: 2024 Department for Education Preschool Family Opinions Survey, Term 3 2024.

Safety, Health and Wellbeing



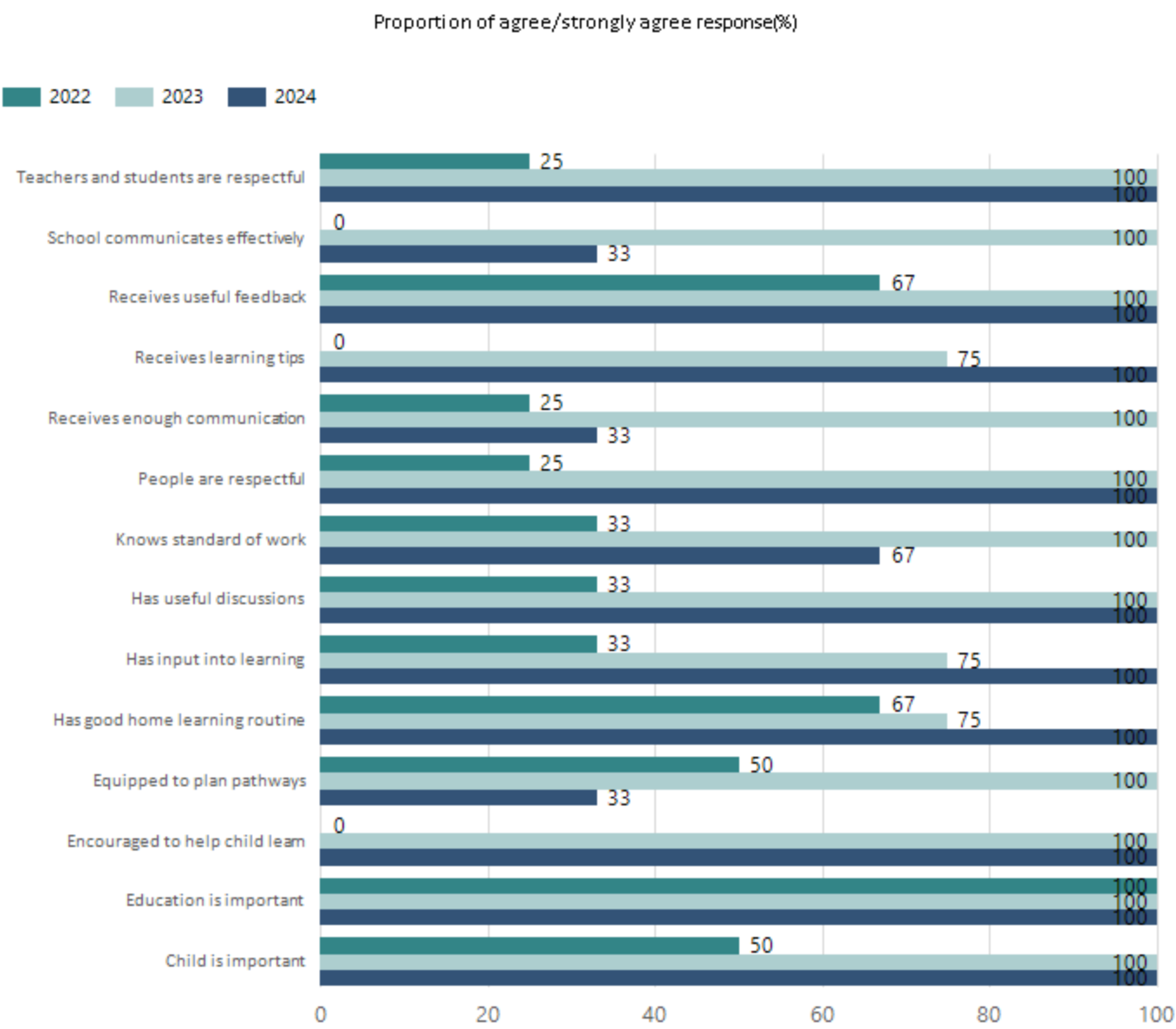
Data Source: 2024 Department for Education Preschool Family Opinions Survey, Term 3 2024.

Support and Inclusion



Data Source: 2024 Department for Education Preschool Family Opinions Survey, Term 3 2024.

School Parent Opinion Survey Results



Data Source: 2024 Department for Education Parent Opinions Survey, Term 3 2024.

Destination Schools

Feeder Schools (Site number - Name)	2022	2023	2024
0509 - Andamooka Primary School	100.0%		
9999 - Unknown		100.0%	100.0%

Note: The data is collected in term 3. It does not reflect actual schools enrolled in by existing preschool children. A blank cell indicates there was no data for students enrolled.

Data Source: Department for Education Destination Data Report, 2024.

Intended Destination

Leave Reason	Number	%
IS - INTERSTATE	3	50.0%
U - UNKNOWN	3	50.0%

Data Source: Department for Education Destination Data Report, 2024. Data extract term 3 2024. Data shows recorded destinations for students that left the school in the previous year. Data is uploaded by schools in term 3 and may not reflect final or total figures at time of report creation.

Highest Qualifications held by the teaching workforce and workforce composition

All teachers at this school are qualified and registered with the SA Teachers Registration Board.

Qualification Level	Number of Qualifications
Bachelor's degrees or Diplomas	2
Postgraduate Qualifications	1

Data Source: Data extracted from Mandatory Workforce Information Collections as on the last pay date of June 2024. As self-reported by staff in the system.

Please note: Data includes staff who are Actively employed and on extended paid leave. Please note only the highest qualification of the Teaching staff is reported. Excludes any number of other certifications earned.

Workforce composition including indigenous staff

	Teaching Staff		Non-Teaching Staff	
	Indigenous	Non-Indigenous	Indigenous	Non-Indigenous
Full-Time Equivalents	0.0	3.0	0.0	4.1
Persons	0.0	3.0	0.0	8.0

Data Source: Data extracted from Mandatory Workforce Information Collection as on the last pay date of June 2024.

Please note: Data includes staff who are actively employed and on extended paid leave. "Indigenous category" is self-reported by staff in the system.

Financial Statement

Funding Source	Amount
Grants: State	982,135.66
Grants: Commonwealth	2,250.00
Parent Contributions	3,341.65
Fund Raising	250.00
Other	10,817.60

Data Source: School supplied data.